

www.fryeburgnewchurch.org

JANUARY 26, 2024

FRYEBURG NEW CHURCH



WEEKLY NEWS JANUARY 26, 2024

FRYEBURG NEW CHURCH

Contact People

Chair of Trustees Lee Dyer

Trustee Susan Logan

Trustee Greg Huang-Dale

Treasurer Jim Dutton

Trustee Terrie Carlson-Rideout

Trustee Brian Baker

Music Director Greg Huang-Dale

Office Secretary Dawn Crowe

Childcare coordinator Dede Frost

Pastor Rev. Catherine Lauber

For contact information visit
www.fryeburgnewchurch.org

CHURCH OFFICE

12 Oxford Street
Fryeburg, Maine 04037
207-935-3413
fryeburgnewchurch@gmail.com

Secretary hours: *(this week)*

Tuesday 9 - 1

Wednesday 9 - 1

Thursday 9 - 1

subject to change without notice

Pastor:

Wed. & Thursday 9:30 - 1:00

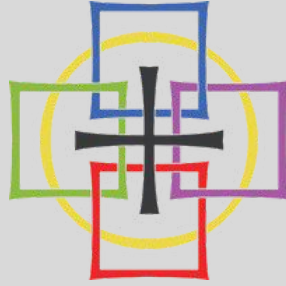
Friday, Sat. & Sun. By appointment

fryeburgnewchurchpastor@gmail.com

207-256-6333

Church Services

HYBRID WORSHIP



ANNOUNCEMENTS

- Don't forget that the **Annual Meeting** is January 28th at 12 noon following our Worship Service and potluck luncheon. We will meet in person and on Zoom. See you then!
- Have an announcement? Let the office know and we'll get it in the newsletter.
- Would you like to read the Bible scriptures for the day? How about leading a children's message? And yes, you can volunteer to do either of those while being online! Please contact Rev. Catherine at fryeburgnewchurchpastor@gmail.com if you would like to contribute to our worship life in any of these ways.

ZOOM LINK

Join Zoom Meeting

<https://us02web.zoom.us/j/85357860199>

Meeting ID: 853 5786 0199

Dial by your location: 1 929 205 6099

GIVING TO THE CHURCH

Ongoing General support is needed for everything from paying the Church staff's salaries to keeping the lights on at the church to buying music for our choir. We depend on donations from our congregation to help offset all of our expenses.

Donations may be made by check mailed to FNC, 12 Oxford Street, Fryeburg, ME 04037, or by donating through PayPal,

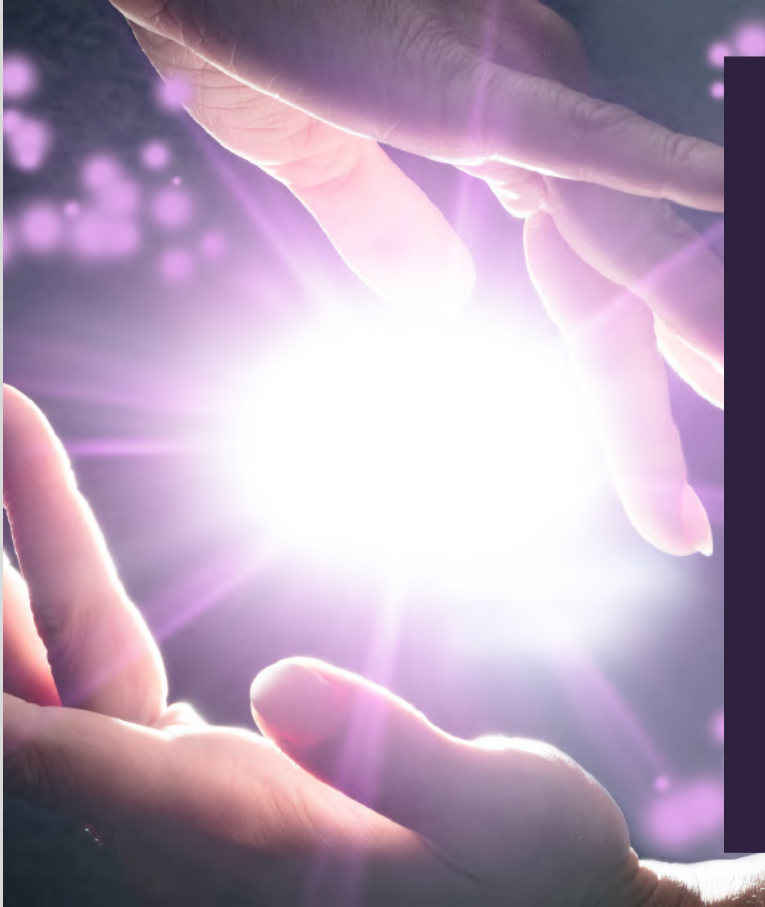
<https://fryeburgnewchurch.org/giving>

PayPal is an online financial service that allows you to pay for items using a secure internet account. You simply choose the bank account, credit card or debit card that you want to use when making a donation. The Trustees chose PayPal because of its name-brand recognition and its excellent reputation for security. Plus, you don't have to have an account with PayPal; you can use it as a guest.

Donations in any amount are always welcomed and very much appreciated.

Thank you for your support!

Please take note:



REIKI AT FNC

Raise your vibes with reiki. An exchange of energy to help promote a feeling of well being and balance.

I will be offering reiki at the church. Donations will go to the church.

Call Terrie at (207) 890-5415 for more information and an appointment.

POTLUCK LUNCHEON AND FNC ANNUAL MEETING

Sunday, January 28th - after worship

Please join us for a Potluck luncheon after worship on January 28th. The Annual Meeting will begin at 12 noon in person and on Zoom.





“For one wild, glad moment we snapped the chain that binds us to earth and joining hands with the winds we felt ourselves divine.”

~ Helen Keller, The Story of My Life

Calendar

- Family Worship ~ Sundays @ 10:00 am
- COFFEE HOUR ~ Volunteers needed
- Trustees meeting ~ February 13 hybrid @ 6:30 pm
- Worship Committee mtg. ~ TBA
- Tai Chi ~ Saturdays 8:30 - 10:00 am (contact Greg Huang-Dale)
- Dinner Bell at St. Elizabeth Ann Seton Church ~
Wednesdays 5pm - 6pm drive through pick-up.
No Dinner Bell during school vacations.
- Game Night at FNC ~ every 2nd & 4th Weds. 5:30 to 7:30 p.m.
- Sound Bath Meditations ~ Wednesday January 31 at 7:00 p.m.
on Zoom.
- Have an event to list here? Please let the office know.
- Potluck Luncheon before Annual Meeting ~ January 28
- Annual Meeting ~ January 28 after worship (11:45 am)
- Candlemas ~ February 2
- Groundhog Day ~ February 2
- Lunar New Year ~ February 10, 2024, Sign: Dragon
- Mardi Gras / Fat Tuesday ~ February 13
- Ash Wednesday ~ February 14
- Valentine's Day ~ February 14
- Random Acts of Kindness Day ~ February 17
- President's Day ~ February 19
- MSAD #72 February Vacation ~ February 19th through the 23rd
- World Day of Prayer ~ March 1
- Palm Sunday ~ March 24
- Easter ~ March 31
- Fun Holidays ~ Wacky, Bizarre Days by Holiday Insights
www.holidayinsights.com/moreholidays/

*Have something to add to the calendar or newsletter?
Please let the office know by giving a call or sending an email.*

**“The universe is not outside
of you. Look inside yourself;
everything that you want,
you already are.”**

~ Rumi ~

Why Is It Hard To Communicate With People In The Afterlife?

Off The Left Eye is a part of the Swedenborg Foundation. Through a variety of media, we dig into Emanuel Swedenborg's writings to learn more about the spiritual backdrop of this life we're living, and then bring you those insights in entertaining, informative, and inspiring ways.

"Why is it hard to communicate with people in the afterlife? Curtis looks at how communication can and cannot work between different levels of existence. "

-Off the Left Eye, YouTube

Watch on YouTube:

Off The Left Eye looks at life and death through the uplifting perspectives provided by eighteenth-century scientist and spiritual teacher, Emanuel Swedenborg. They explore topics from Swedenborg's writings and discuss how they relate to modern-day spiritual growth seekers. They cover the afterlife, angels and spirits, near-death experiences, God, spirituality, and more, and try to balance these faith-based topics with evidence-based research from subject experts.

<https://www.youtube.com/watch?v=ybpZ5EyFin4>

Many FREE e-books available ~ visit:

<http://www.swedenborg.com>

